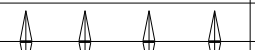
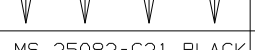




4

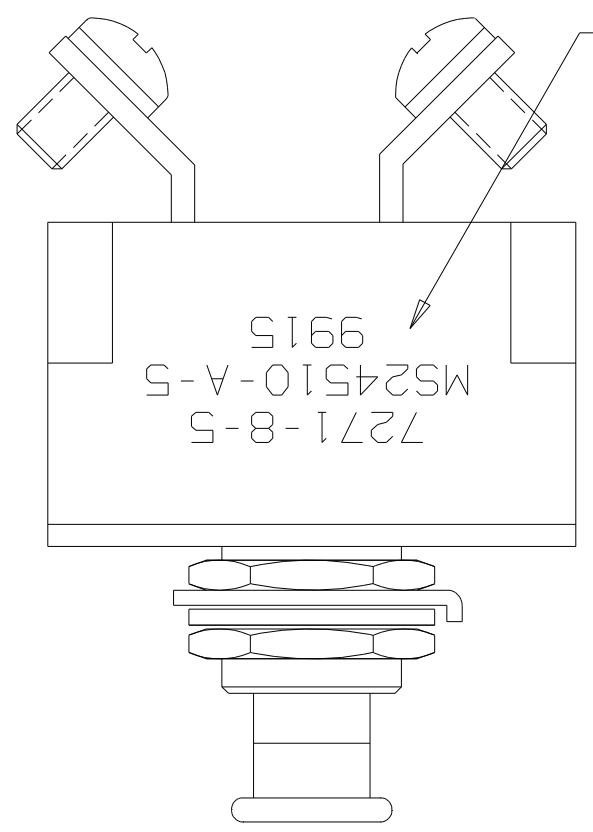
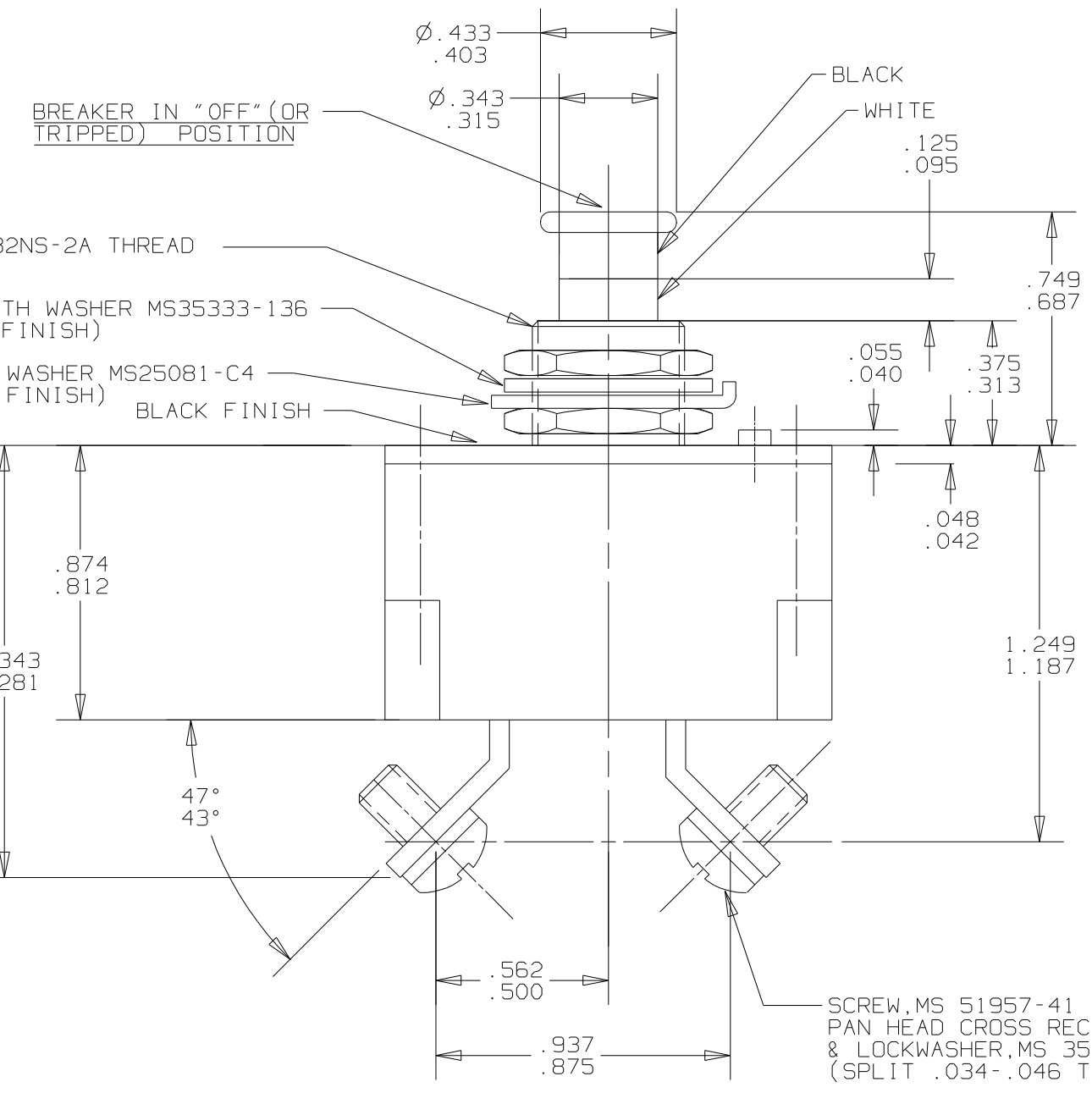
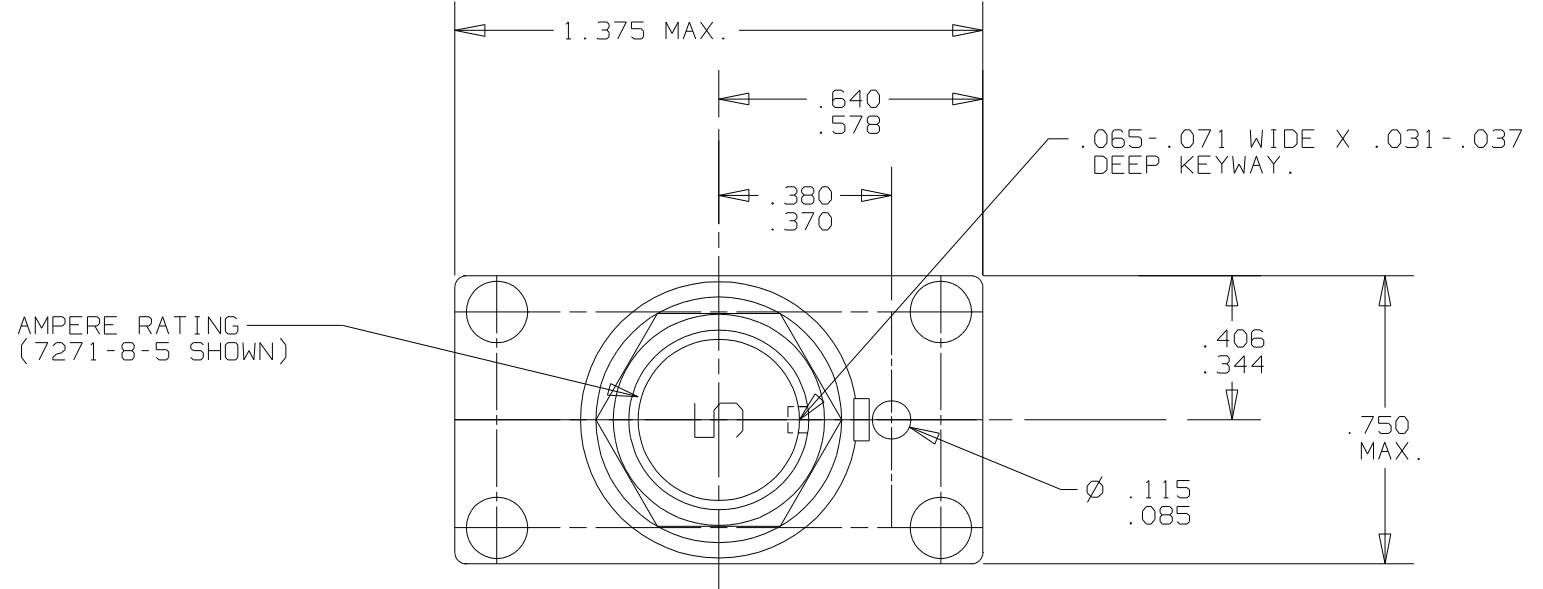
3

2

1

MOUNTING NUT	MAXIMUM VOLTAGE DROP	% RATED CURRENT			PART NO.	AMP. RATING	CUSTOMER PART NO.
		200	400	600			
MS 25082-B21	0.75	40-120	3-26	1-12	7271-8-3	3	
MS 25082-C21 BLACK	0.65	40-100	3-22	1-10	7271-8-5	5	MS24510-A-5
	0.50	10-70	.75-7.0	.25-2.5	7271-8-7 1/2	7 1/2	MS24510-A-7 1/2
					7271-8-10	10	MS24510-A-10
MS 25082-C21 BLACK					7271-8-15	15	MS24510-A-15
MS 25082-B21					7271-8-20	20	
					7271-8-25	25	
					7271-8-30	30	
MS 25082-B21					7271-8-35	35	

REVISIONS						
ZONE	LTR	7271-8	DESCRIPTION	PROJ. 438	DATE	APPROVED
	U		MOVED CODE STAMP TO FAR SIDE	CRMS1147 JRB	6-13-00	S.J.B.



CODE PART NO. & MS PART NO. PER TABLE ABOVE. DATE CODE PER 10588-285

**PERFORMANCE CHARACTERISTICS**  
(DETAIL PERFORMANCE PER MIL-C-5809)

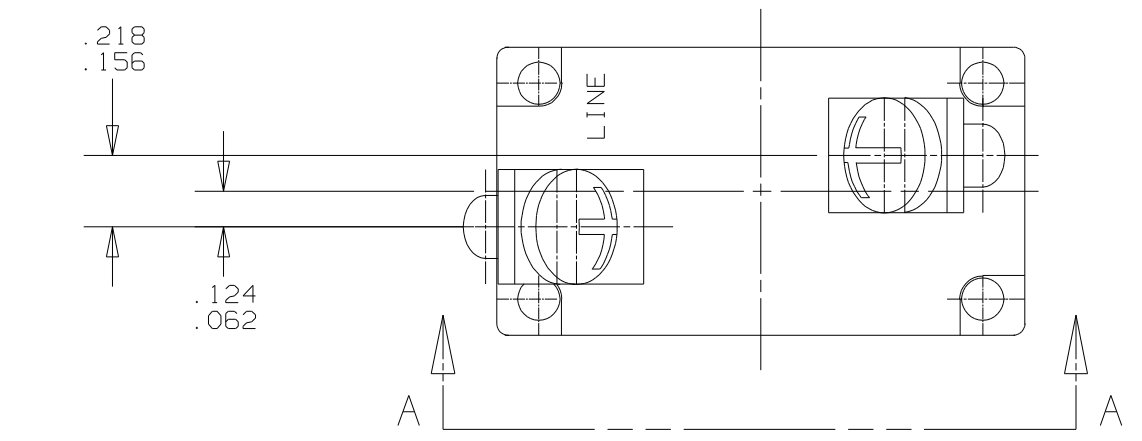
OVERLOAD CYCLING-----100 CYCLES AT 200% RATING  
 SINUSOIDAL VIBRATION-----10 G'S 50-500 HZ  
 MECHANICAL SHOCK-----30 G'S AT 11.0 MILLISECOND DURATION  
 ACCELERATION-----10 G'S MINIMUM  
 SAND & DUST-----12 HOURS  
 CORROSION-----SALT SPRAY 48 HOURS  
 HUMIDITY-----10 DAYS  
 EXPLOSION PROOF-----WHILE INTERRUPTING RUPTURE CURRENTS

MAXIMUM OPERATING ALTITUDE: 70,000 FT.  
 WEIGHT: 39.0 GRAMS MAX.  
 MAXIMUM OPERATING FORCES:  
 PULL OUT----- 8 LBS. MAX.  
 RESET-----12 LBS. MAX.

CURRENT INTERRUPTION CAPACITY: 4,000 A @ 30 VDC.  
 3,500 A @ 120 VAC, 400HZ.



ENDURANCE:  
 120 VAC-----400 HZ INDUCTIVE -----5000 CYCLES  
 120 VAC-----400 HZ RESISTIVE -----5000 CYCLES  
 30 VDC-----INDUCTIVE -----200 CYCLES  
 30 VDC-----RESISTIVE -----5000 CYCLES  
 NO LOAD-----MECHANICAL -----10000 CYCLES

CALIBRATION:	AMBIENT TEMP.	HOLD	TRIP
	+25°C	115% RATING	145% RATING
	-40°C	138% RATING	175% RATING
	+71°C	80% RATING	125% RATING



NOTES:  
 1. EPOXY SURFACES ARE NON-DIMENSIONED. ENVELOPE DRAWING DIMENSIONS DO NOT APPLY TO THESE PROJECTED EPOXY SURFACES.

SUPERSEDES 7271-8 REV'T" DATED 5-13-99

UNLESS OTHERWISE SPECIFIED DIMENSIONS ARE IN INCHES	DRAWN O. LARSEN	DATE 5-3-95	 <b>TEXAS INSTRUMENTS</b> <small>ATLLEBORO, MASSACHUSETTS 02703</small>	 <b>KLOXON</b> <small>CONTROL PRODUCTS DIVISION</small>
TOLERANCE ON FRACTIONS DECIMALS ANGLES	ENGINEER M. J. LAVADO	DATE 5-3-95		
	APPROVED H. HIRSBRUNNER	DATE 5-16-89	TITLE 7271-8 TYPE PUSH-PULL TRIP-FREE CIRCUIT BREAKER ENVELOPE DRAWING	
	APPROVED PETER G. BERG	DATE 5-3-95	SIZE C	CODE IDENT NO. 82647
MATERIAL	SIGNATURES ON FILE. REFER TO ELECTRONIC CHANGE NOTICE.		7271-8	
			SCALE: 2X	SHEET 1 OF 1