

Property of  
Sensata Technologies

ZONE	REV.	REVISION DESCRIPTION	ECN NO.	DATE
B2	M	MS 26574-1-1/2L WAS MS 26574-1 1/2L MS 26574-2-1/2L WAS MS 26574-2 1/2L MS 26574-7-1/2L WAS MS 26574-7 1/2L NOTE 5; 10588-285 WAS 105288-285; PD	ECN0042046	16-MAY-2008

PERFORMANCE CHARACTERISTICS (DETAIL PERFORMANCE PER MIL-C-5809)

OVERLOAD CYCLING ----- 100 CYCLES AT 200% RATING  
 VIBRATION ----- 10 G'S 50-500 HZ  
 MECHANICAL SHOCK ----- 35 G'S AT 11.5 MILLISECOND DURATION  
 ACCELERATION ----- 10 G'S MINIMUM  
 SAND AND DUST ----- 12 HOURS  
 CORROSION ----- SALT SPRAY 50 HOURS  
 HUMIDITY ----- 10 DAYS  
 EXPLOSION PROOF ----- WHILE INTERRUPTING RUPTURE CURRENTS

MAXIMUM OPERATING ALTITUDE: 80,000 FT. (24,384 M)

WEIGHT: 28.0 GRAMS MAX.

MAXIMUM OPERATING FORCES:  
 PULL OUT ----- 5 LBS. MAX. (22.2 N)  
 RESET ----- 5 LBS. MAX. (22.2 N)

ENDURANCE:  
 120 VAC ----- 400 HZ INDUCTIVE ----- 2500 CYCLES  
 RESISTIVE ----- 5000 CYCLES  
 30 VDC ----- INDUCTIVE ----- 2500 CYCLES  
 RESISTIVE ----- 5000 CYCLES  
 MECHANICAL ----- 5000 CYCLES

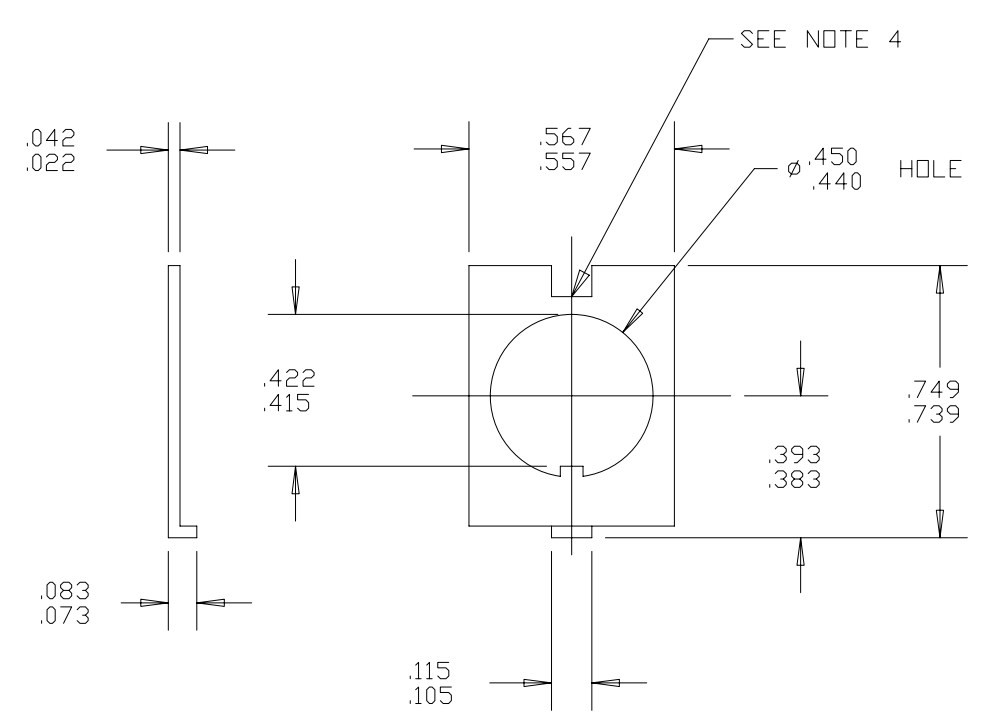
CALIBRATION:

AMBIENT TEMP.	MIN.ULT.TRIP	MAX.ULT.TRIP	200%	500%	1000%
+25°C	115% RATING	150% RATING	2-20 SEC.	.16-1.0 SEC.	.046-.28 SEC.
-55°C	135% RATING	180% RATING	-----	-----	-----
+71°C	90% RATING	130% RATING	-----	-----	-----

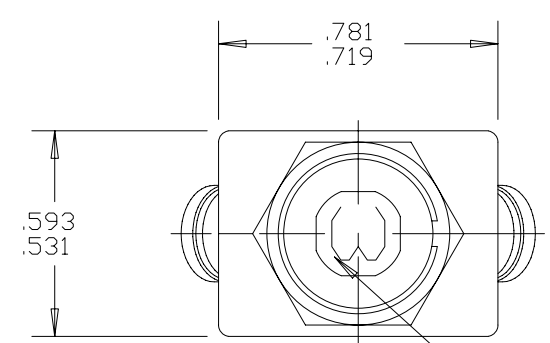
PART NO.	MS PART NO.	AMP RATING	MAXIMUM VOLTAGE DROP	CURRENT INTERRUPTING CAPACITY	
				120 VAC, 400 HZ	28 VDC
7274-70-1/2	MS 26574-1/2L	1/2	2.00	UNLIMITED	UNLIMITED
7274-70-3/4	MS 26574-3/4L	3/4	1.45	UNLIMITED	UNLIMITED
7274-70-1	MS 26574-1L	1	1.10	UNLIMITED	UNLIMITED
7274-70-1 1/2	MS 26574-1-1/2L	1 1/2	0.75	UNLIMITED	UNLIMITED
7274-70-2	MS 26574-2L	2	0.70	800 AMPS	UNLIMITED
7274-70-2 1/2	MS 26574-2-1/2L	2 1/2	0.50	800 AMPS	UNLIMITED
7274-70-3	MS 26574-3L	3	0.33	800 AMPS	UNLIMITED
7274-70-4	MS 26574-4L	4	0.30	800 AMPS	UNLIMITED
7274-70-5	MS 26574-5L	5	0.25	800 AMPS	UNLIMITED
7274-70-7 1/2	MS 26574-7-1/2L	7 1/2	0.20	500 AMPS	2000 AMPS
7274-70-10	MS 26574-10L	10	0.15	500 AMPS	2000 AMPS
7274-70-15		15	0.15	500 AMPS	2000 AMPS
7274-70-20		20	0.15	500 AMPS	800 AMPS

NOTES:

- ALL MOUNTING HARDWARE HAS A DULL BLACK FINISH.
- CIRCUIT BREAKERS ARE SUITABLE FOR MOUNTING IN A 1/8" THICK PANEL OR LESS.
- EPOXY SURFACES ARE NON-DIMENSIONED. ENVELOPE DRAWING DIMENSIONS DO NOT APPLY TO THESE PROJECTED EPOXY SURFACES.
- NON FUNCTIONAL NOTCH ON THE BACK OF THE KEYWAY WASHER IS OPTIONAL.
- DATE CODE PER 10588-285.



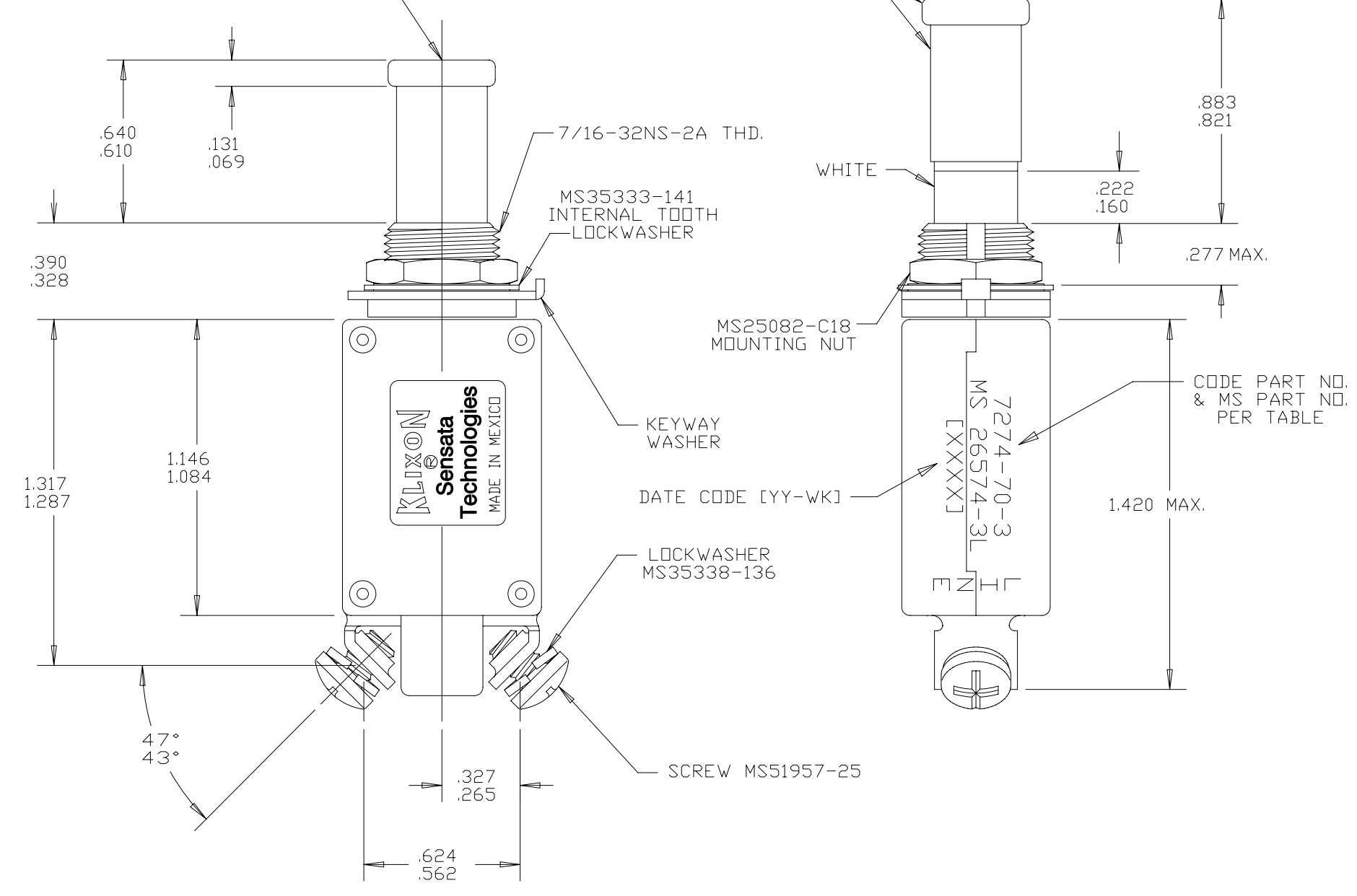
KEYWAY WASHER DETAIL



7274-70-3 AMP RATING SHOWN

PUSH PULL BUTTON POSITION WITH CIRCUIT BREAKER CLOSED WHITE BAND NOT VISIBLE

PUSH PULL BUTTON POSITION WITH CIRCUIT BREAKER TRIPPED OR OFF



FOR REFERENCE ONLY, CHECK LATEST REVISION BEFORE USE. PARTS MADE TO THIS PRINT MUST CONFORM TO E9898 REV. E		529 PLEASANT STREET P.O. BOX 2964 ATTLEBORO, MA 02703	
DRAWN <b>CHAS. FLEURANT</b> DATE 18-APR-1994 ENGINEER <b>K.B. GASSER</b> DATE 18-APR-1994 APPROVED <b>M.D. LILLEY</b> DATE 18-APR-1994 APPROVED	SENSATA TECHNOLOGIES PROPRIETARY AND CONFIDENTIAL. NEITHER THIS PRINT NOR THE INFORMATION CONTAINED HEREON IS TO BE USED AGAINST THE INTERESTS OF SENSATA TECHNOLOGIES OR AGAINST THE INTERESTS OF ANY OF ITS AFFILIATED COMPANIES OR WHOLLY OWNED SUBSIDIARIES. UNLESS OTHERWISE SPECIFIED DIMENSIONS ARE IN INCHES TOLERANCES DECIMALS      ANGLES	TITLE <b>7274 STYLE CIRCUIT BREAKER          PUSH PULL-TRIP FREE          ENVELOPE DRAWING</b>	SIZE <b>C</b>
DATE	DO NOT SCALE DRAWING	DWG NO. <b>7274-70</b>	REV. <b>M</b>
THIRD ANGLE PROJECTION		SCALE 1:1	AUTOCAD SHEET 1 OF 1
DEVICE:		PROJECT:3457 1	