

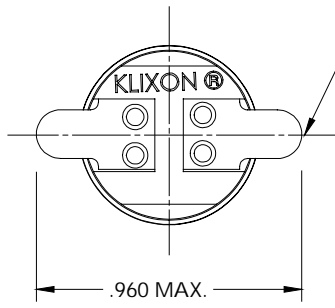
4

3

2

1

REVISIONS				
ZONE	LTR	DESCRIPTION	DATE	APPROVED



2X FLAT WELD TERMINALS
 .028 THICK REF.
 .172 WIDE REF.

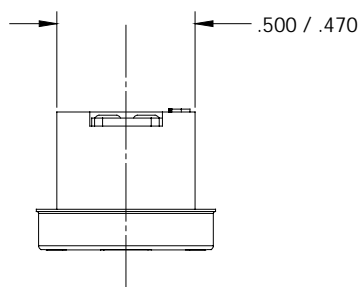
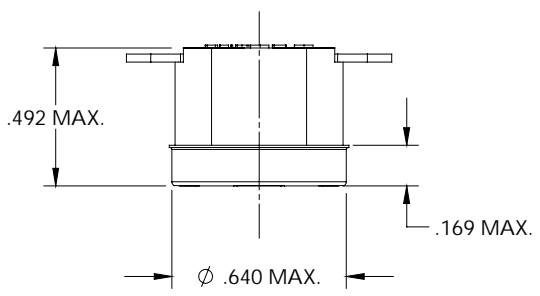
CHARACTERISTICS


PART NO. 7BT2L2C-**-**
 7BT2F2C-**-**

"L" DESIGNATES OPEN ON TEMPERATURE RISE
 "F" DESIGNATES CLOSE ON TEMPERATURE RISE

* WHEN CUSTOMER'S TEMPERATURE CHARACTERISTICS
 ARE ESTABLISHED, A DASH NO. WILL BE ASSIGNED,
 THEREBY COMPLETING THE PART NO.

** WHEN WIRE LEADS ARE REQUESTED, A SECOND DASH
 NO. WILL BE ASSIGNED, THEREBY COMPLETING THE PART NO.



UNLESS OTHERWISE SPECIFIED DIMENSIONS ARE IN INCHES				
TOLERANCES ON FRACTIONS AND ANGLES				
DRAWN S. MARQUIS		DATE 3/25/02		TEXAS INSTRUMENTS ATILEBORO MA 02705 
ENGINEER		APPROVED		
MATERIAL		APPROVED		THERMOSTAT SWITCH ENVELOPE DRAWING
SIGNATURES ON FILE. REFER TO ELECTRONIC CHANGE NOTICE.		SIZE B	CODE IDENT NO. 82647	
SCALE			SHEET	

NEITHER THIS PRINT NOR THE INFORMATION
 CONTAINED THEREON IS TO BE USED AGAINST THE
 INTEREST OF TEXAS INSTRUMENTS, INC. OR AGAINST
 THE INTERESTS OF ANY OF ITS AFFILIATED COMPANIES
 OR WHOLLY OWNED SUBSIDIARIES.

FOR REFERENCE ONLY
 CONSULT TEXAS INSTRUMENTS
 CUSTOMER SERVICE FOR LATEST
 REVISION BEFORE USE

4

3

2

1