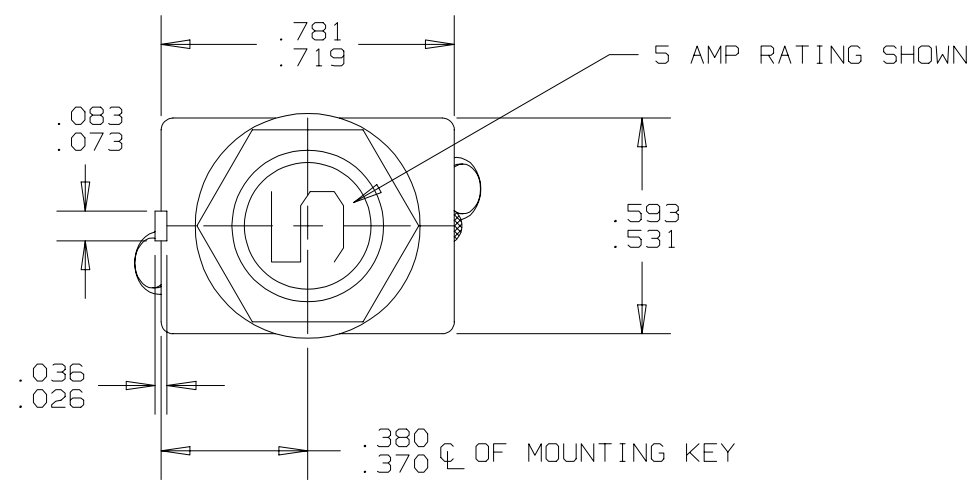


REVISIONS						
ZONE	LTR	2TC63	DESCRIPTION	PROJ. 1041	DATE	APPROVED
	H	SEE ECN		ECN0017504 PAF	8-20-04	D.A.



- NOTES:
1. EPOXY SURFACES ARE NON-DIMENSIONED. ENVELOPE DRAWING DIMENSIONS DO NOT APPLY TO THESE PROJECTED EPOXY SURFACES.
  2. TERMINAL AND MOUNTING HARDWARE MAY BE PACKAGED RATHER THAN INSTALLED.
  3. COUNTRY OF ORIGIN IS SHOWN FOR ILLUSTRATION PURPOSES ONLY. COUNTRY OF ORIGIN TO BE IDENTIFIED AS REQUIRED.
  4. DATE CODE PER 10588-285.
  5. MARK IN APPROXIMATE POSITION SHOWN IN BLACK INK PER 12506-70.

PERFORMANCE CHARACTERISTICS

DETAIL PERFORMANCE PER MIL-C-5809 AND MS 3320 "V"

OVERLOAD CYCLING	100 CYCLES AT 200% RATING
VIBRATION	10 G'S CONDITION "C" 55-2000 HZ AND 15 G'S CONDITION "B" 10-2000 HZ
MECHANICAL SHOCK	50 G'S
ACCELERATION	10 G'S
SAND AND DUST	12 HOURS
CORROSION	SALT SPRAY 50 HOURS
HUMIDITY	10 DAYS
EXPLOSION PROOF	WHILE INTERRUPTING RUPTURE CURRENTS

ENDURANCE:

120 VAC	400 HZ INDUCTIVE	2500 CYCLES
30 VDC	400 HZ RESISTIVE	5000 CYCLES
	INDUCTIVE	2500 CYCLES
	RESISTIVE	5000 CYCLES
	NO LOAD	10000 CYCLES

CALIBRATION: 1 AMP THRU 25 AMP

	MIN. ULT. TRIP	MAX. ULT. TRIP	200%	500%	1000%
+25°C, +77°F	115% RATING	138% RATING	5-20 SEC.	.5-2.0 SEC.	.12-.53 SEC.
+121°C, +250°F	115% RATING	160% RATING	7-40 SEC.	.6-3.0 SEC.	.16-.8 SEC.
+121°C, +250°F	100% RATING	138% RATING	3-13 SEC.	.33-1.1 SEC.	.07-.3 SEC.

RUPTURE:

1 AMP	120 VAC, 400 HZ	3500 AMPS
2 AND 2 1/2 AMP	120 VAC, 400 HZ	2800 AMPS
3 THRU 15 AMP	120 VAC, 400 HZ	2500 AMPS
20 AMP	120 VAC, 400 HZ	2000 AMPS
1 THRU 20 AMP	28 VDC	6000 AMPS
25 AMP	28 VDC	1625 AMPS
25 AMP	120 VAC, 400 HZ	1800 AMPS

MAXIMUM OPERATING FORCES

PULL OUT ----- 5 LBS. MAX. (22.2 N)

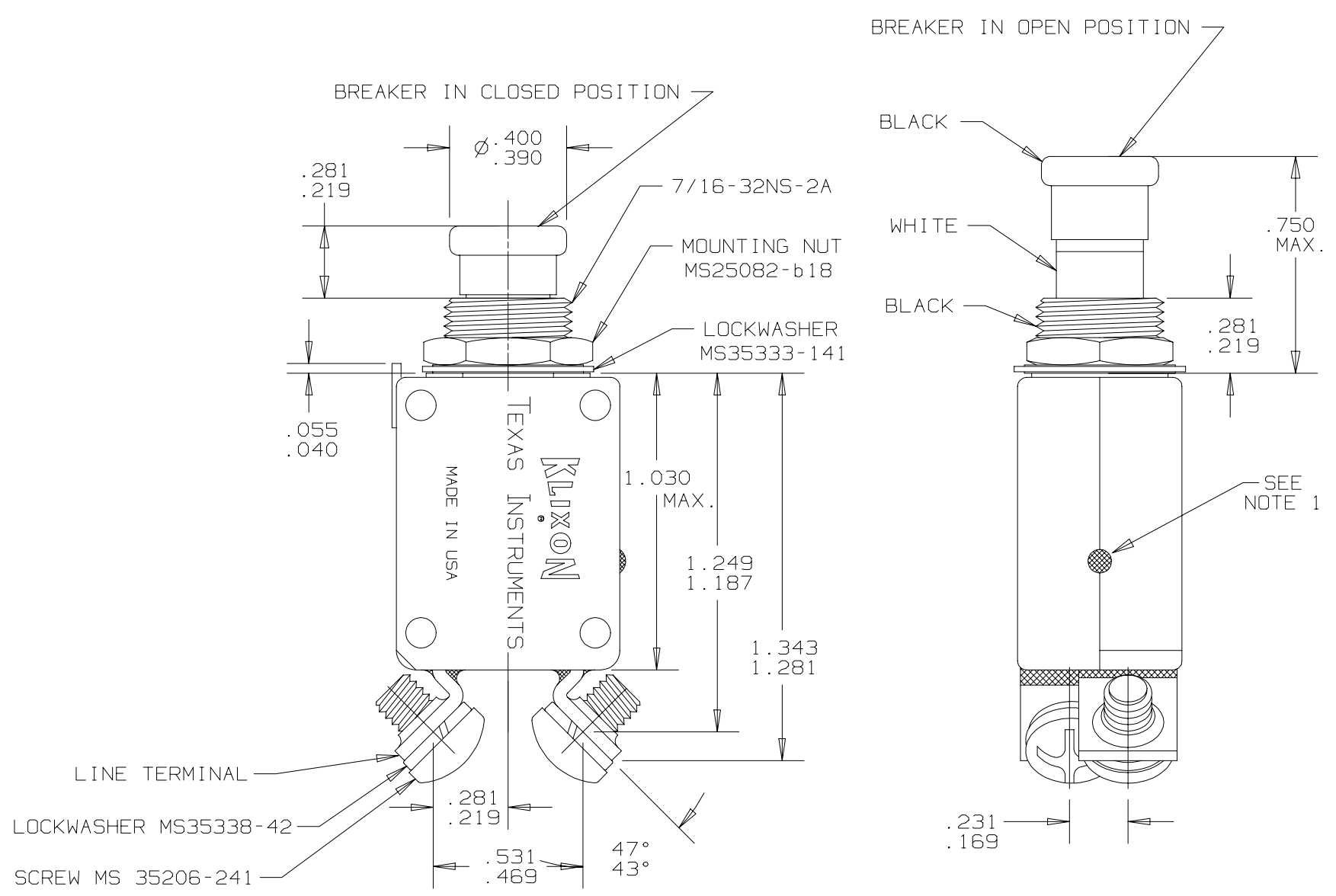
RESET ----- 5 LBS. MAX. (22.2 N)

OPERATING ALTITUDE: 70,000 FT. (21,000 M)

WEIGHT: 25.0 GRAMS MAX.

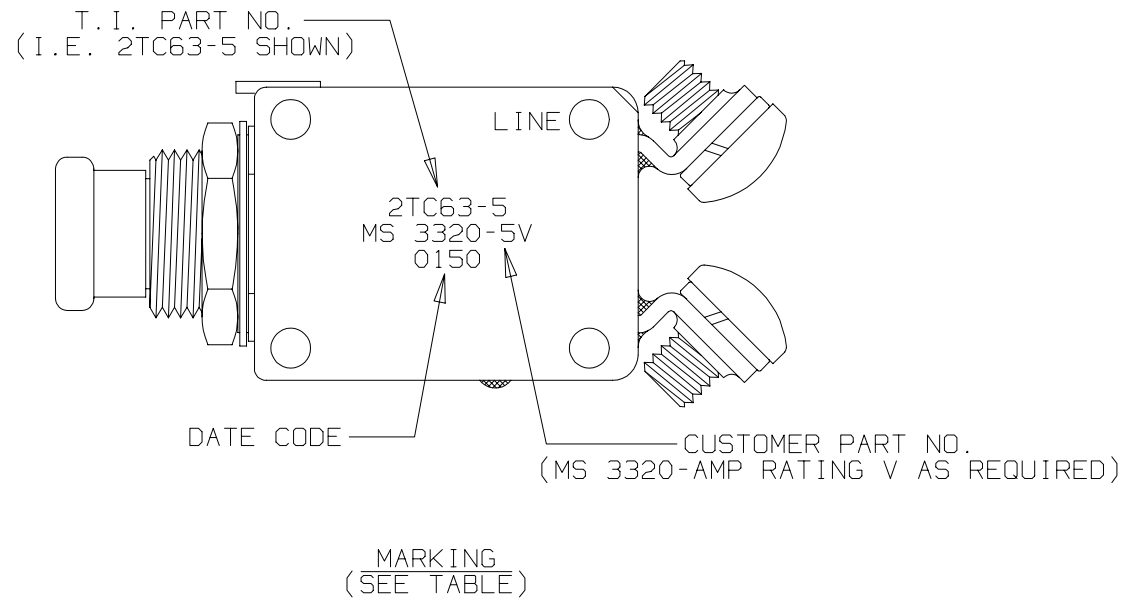
VOLTAGE DROP:

1 AMP	1.10 VOLTS MAX.
2 AMP	0.70 VOLTS MAX.
2.5 AMP	0.50 VOLTS MAX.
3 AMP	0.40 VOLTS MAX.
4 AMP	0.37 VOLTS MAX.
5 AMP	0.35 VOLTS MAX.
7.5 AMP	0.30 VOLTS MAX.
10 AMP	0.28 VOLTS MAX.
15 AMP	0.25 VOLTS MAX.
20 AMP	0.25 VOLTS MAX.
25 AMP	0.20 VOLTS MAX.



MARKING TABLE

2TC63-25	N/A
2TC63-20	MS 3320-20V
2TC63-15	MS 3320-15V
2TC63-10	MS 3320-10V
2TC63-7 1/2	MS 3320-7 1/2V
2TC63-5	MS 3320-5V
2TC63-4	MS 3320-4V
2TC63-3	MS 3320-3V
2TC63-2 1/2	MS 3320-2 1/2V
2TC63-2	MS 3320-2V
2TC63-1	-
T.I. PART NO.	MS PART NO.



THIS IS A CAD DRAWING. THE GEOMETRY IN THE ASSOCIATED CAD COMPUTER FILE IS DIMENSIONALLY ACCURATE. WHEN DRAWING IS BEING REVISED, THE GEOMETRY MUST BE UPDATED IN ALL VIEWS AND ON ALL SHEETS.

UNLESS OTHERWISE SPECIFIED DIMENSIONS ARE IN INCHES	DRAWN TOM DAIL	DATE 10-30-89	 Texas Instruments ATTLEBORO, MASSACHUSETTS 02703  Klixon CONTROL PRODUCTS DIVISION
TOLERANCE ON FRACTIONS DECIMALS ANGLES	ENGINEER JACQUES CHAMMAS	DATE 12-4-89	
	APPROVED		TITLE PART NO. 2TC63 AMBIENT COMPENSATED, HIGH TEMP. CIRCUIT BREAKER PUSH-PULL, TRIP FREE ENVELOPE DRAWING
MATERIAL			SIZE CODE IDENT NO. C 82647
	SIGNATURES ON FILE. REFER TO ELECTRONIC CHANGE NOTICE.		2TC63
		SCALE: 4X	SHEET 1 OF 1